

# MONTHLY MEMBERSHIP PROGRESS REPORT

LOCATION NEW JERSEY

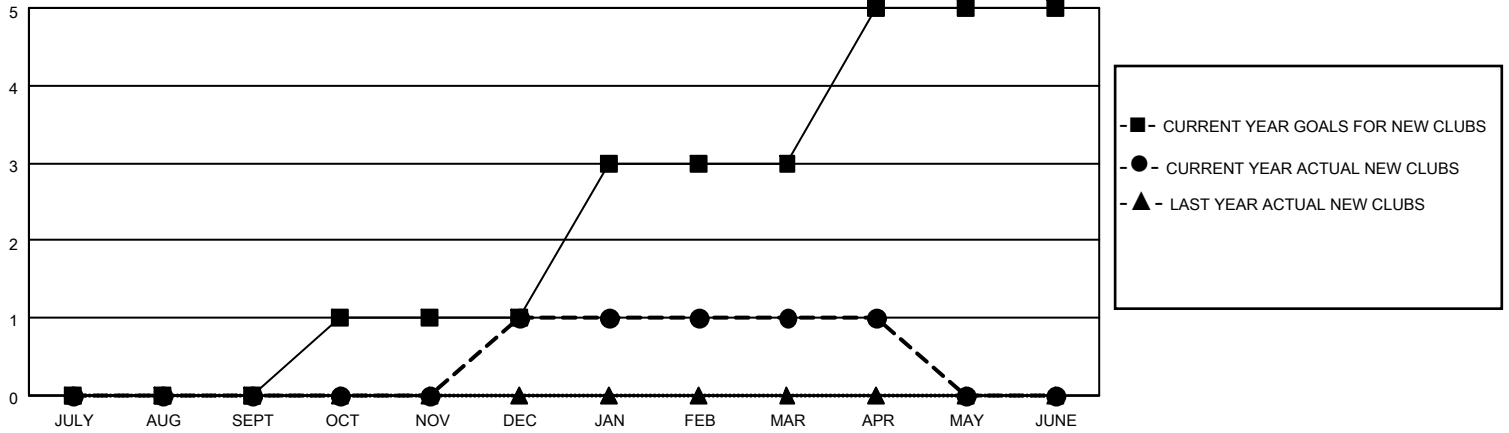
District 16 L

Results as of: 4/30/2021

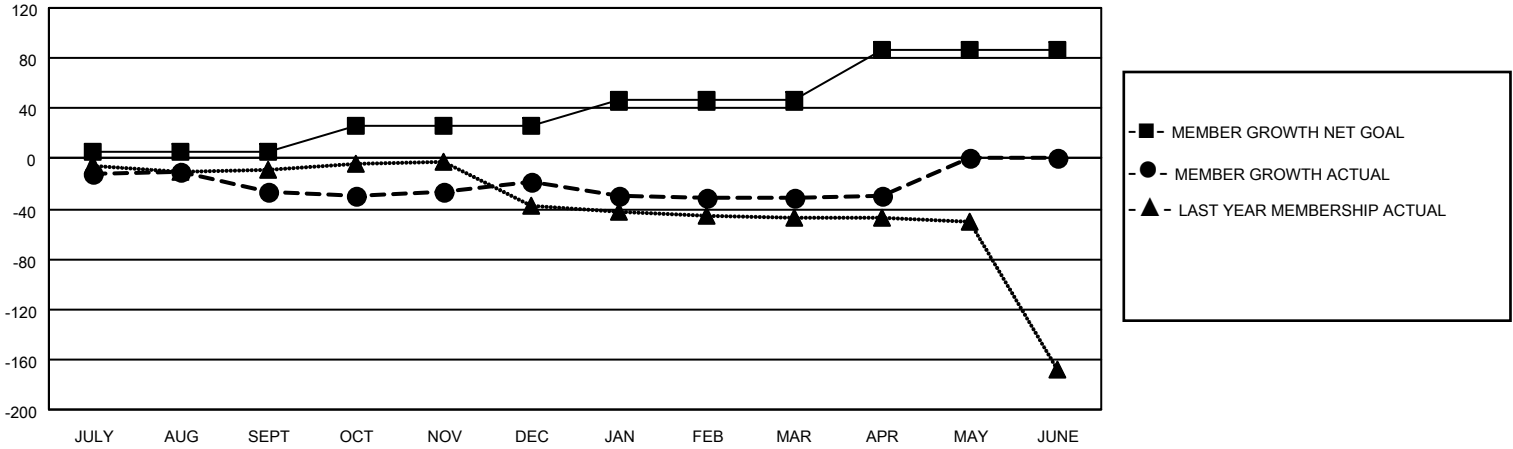
Clubs			
RESULTS FOR 2020-2021			
QUARTER	NEW CLUB GOAL	NEW CLUBS	DROPPED CLUBS
JULY/AUG/SEPT	0	0	2
OCT/NOV/DEC	1	1	1
JAN/FEB/MAR	2	0	1
APR/MAY/JUNE	2	0	0

Members			
RESULTS FOR 2020-2021			
QUARTER	MEMBER GROWTH NET GOAL	MEMBER GROWTH ACTUAL	DROPPED MEMBERS ACTUAL (including transfers)
JULY/AUG/SEPT	6	50	46
OCT/NOV/DEC	20	50	34
JAN/FEB/MAR	20	15	26
APR/MAY/JUNE	40	8	3

**GOALS AND ACTUAL NEW CLUBS CUMULATIVE**



**GOALS AND ACTUAL MEMBERS CUMULATIVE**



<b>DROPPED CLUBS: 4</b>	
<b>DROPPED MEMBERS</b>	
DECEASED	20
CLUB CANCELLED	0
OTHER	89
<b>TOTAL</b>	<b>109</b>

20 CLUBS OF 60 ADDED 1 OR MORE NEW MEMBERS

<u>GENDER DISTRIBUTION</u>	
MALE	944 (66.29%)
FEMALE	480 (33.71%)

[CLICK HERE FOR CUMULATIVE MEMBERSHIP DATA](#)

TOTAL FAMILY UNIT MEMBERS	176
FAMILY MEMBERS PAYING HALF DUES	93